

# EUSA: Developing Class Rep Engagement through Institutional Partnership



**Tanya Lubicz-Nawrocka**

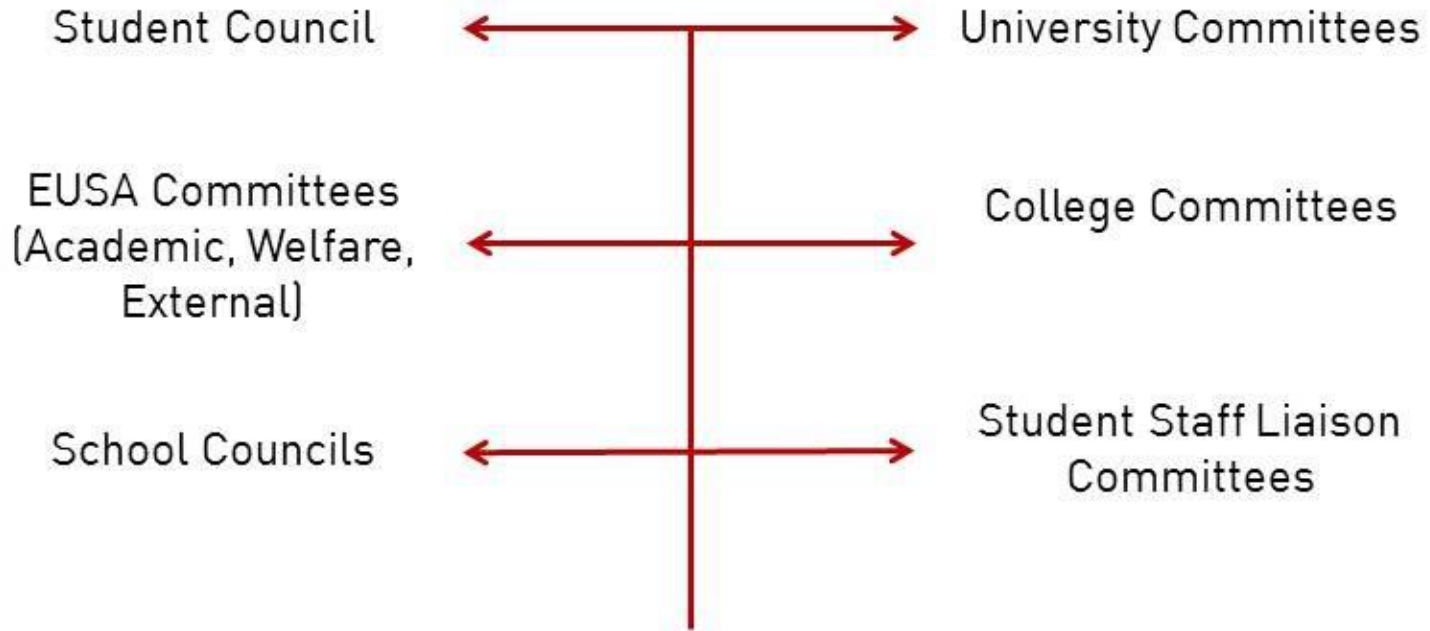
**@EUSAGetInvolved / @TanyaLubiczNaw**

**eusa**  
CLASS REPS



## EUSA

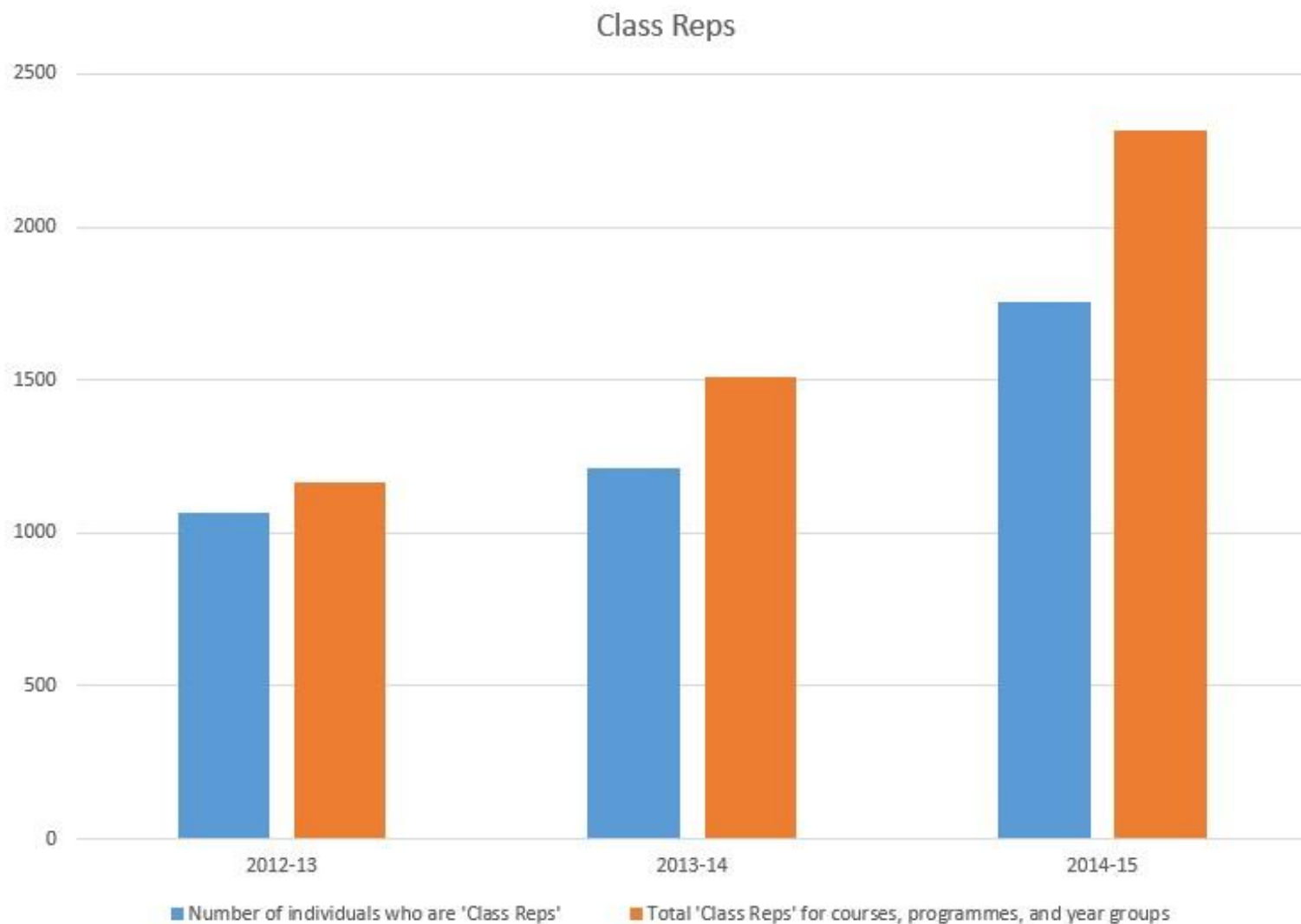
## University



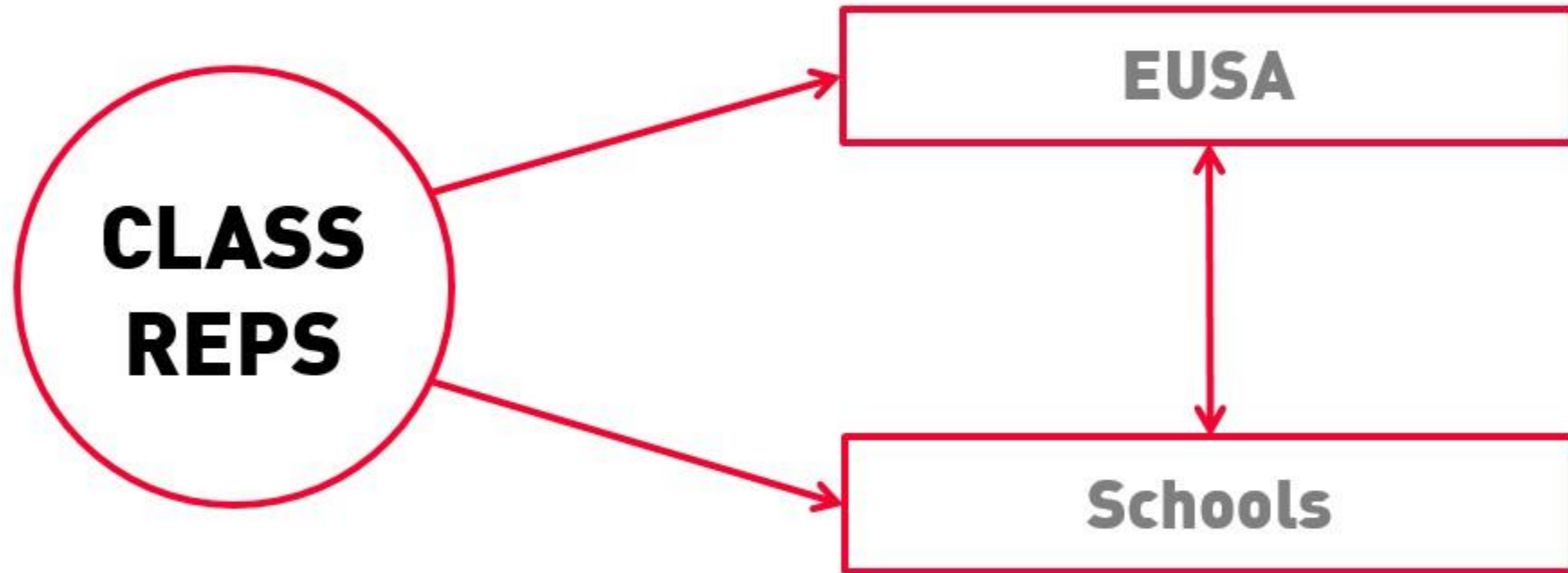
**CLASS REPS**

**STUDENTS**

# Context: Increases in Numbers of Class Reps



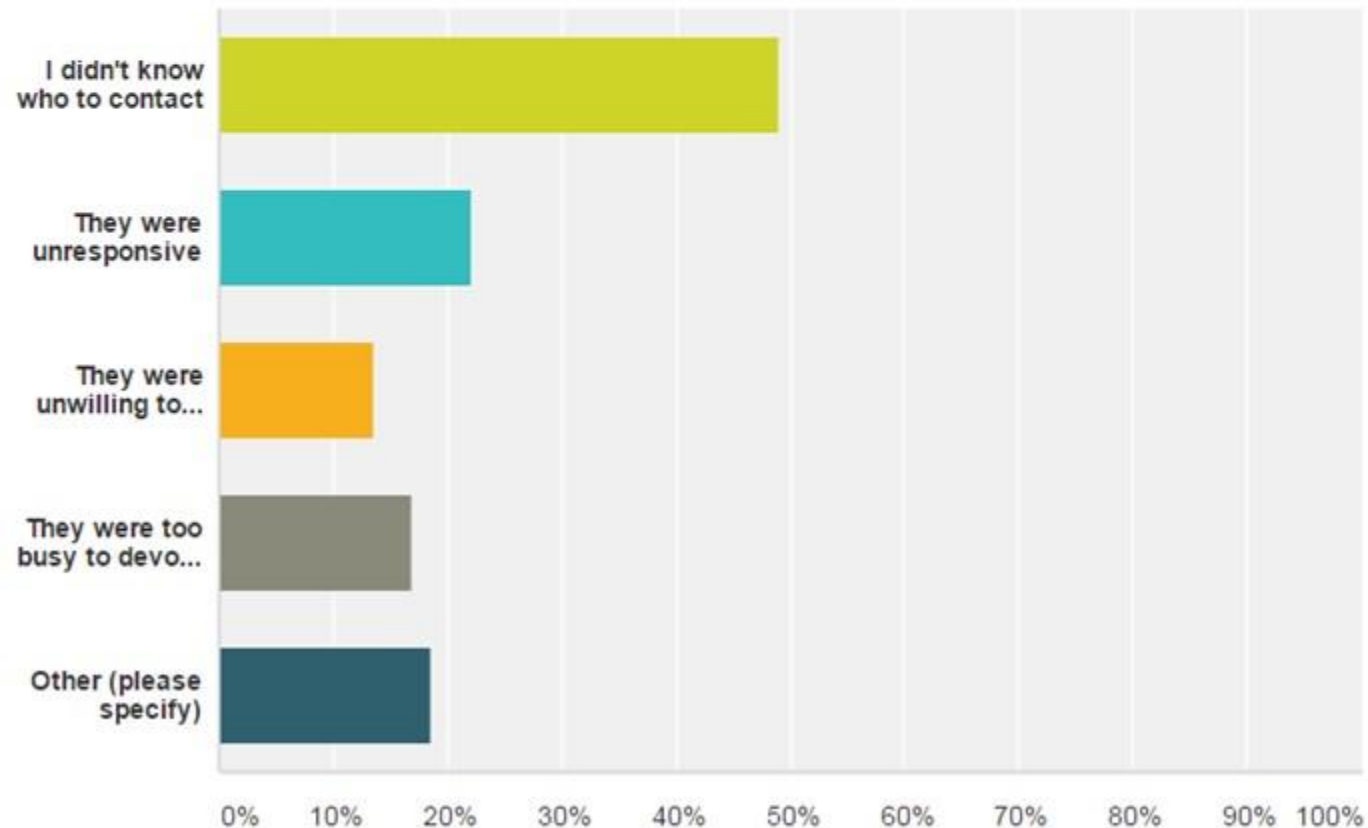
# Dual Role



# Communication Problems

If you had difficulty communicating with academic or support staff in your School, what was the reason? (select all that apply)

Answered: 59 Skipped: 73





# Problem-Solving

- ❑ Meetings with over half of the Schools' senior management
- ❑ Suggesting School-hosted Class Rep Welcome Events
  - ❑ 100% of the Schools we met with hosted Class Rep Welcome Events
  - ❑ Co-hosted by elected School Conveners and School Staff
  - ❑ Well-attended with extremely positive feedback
- ❑ Suggesting School-hosted Class Rep Welcome Events



# Results

- ❑ 100% more Class Reps attending training
- ❑ Decreases in communication problems with Schools
  - ❑ Down from 35% to 19%
- ❑ Increases in self-reported Class Rep attendance at SSLCs
- ❑ Correlations with increased election engagement
  - ❑ Record number of students standing for positions
  - ❑ Increased voting turnout (up 18%)



## Next Step: Recognising Class Reps' Hard Work

- ❑ Culture change of School engagement - targeting less engaged Schools
  - ❑ Correlations in strong Schools
  - ❑ Now drawing on these successful models to work with the other Schools
- ❑ Recognising and rewarding Reps' successes
  - ❑ Quality not quantity
  - ❑ Blogs to reflect on and share achievements
  - ❑ Open Badges to reward Class Reps





# Open Badges



# Thank you!

- ▣ Questions?
- ▣ Comments?

